

EverythingHR Talent Development Institute

We Are EverythingHR

Manufacturing and Engineering Program



EverythingHR

Talent Development Institute

Administrative Office:

1055 E. South Blvd Suite 225 Rochester Hills, MI 48307

586.461.1400 Office

586.461.1181 Fax

www.EverythingHR.net

Training Location

440 Burroughs Detroit, MI 48202

© All Rights Reserved

CONTENTS

About Us.....	3
Company Commitment	3
Courses and Program.....	3
Manufacturing and Engineering Program	4
Course Descriptions.....	5
Basic Project Management.....	5
Implementing Project Management Strategies.....	5
Applied Project Management.....	5
Project Management Certification.....	5
Business Process Management.....	5
Product Development and Management.....	6
Introduction PEGA/PRPC.....	6
Advanced PEGA/PRPC.....	6
Total Quality Management Basics.....	6
7 Quality Tools.....	6
Design of Experiments.....	7
Problem Solving.....	7
Corrective Action, Preventive Action, and Continual Improvement.....	7
Introduction to Lean.....	7
Lean Manufacturing Service.....	7
Lean System and Production.....	8
Implementing Lean.....	8
Six Sigma Yellow Belt.....	8
Six Sigma Green Belt.....	8
Process Improvement.....	8
PLC Troubleshooting.....	8
Basic Blueprint Reading.....	9
Basic Engineering Design.....	9
Engineering Mechanics.....	9
Basic PLC Programming.....	9
CAD/CAM.....	9
Leadership Development.....	9

ABOUT US



EverythingHR Talent Development Institute is the training and development division of EverythingHR and EverythingHR Financial Services. Established in the State of Michigan in 2012 as a limited liability corporation, EverythingHR Talent Development Institute is a certified minority woman-owned small business. We have been providing innovative training programs to businesses and organizations of varied industries and sizes for nearly a decade. EverythingHR specializes in courses that lead to certification. We also collaborate with colleges and universities to provide clients with continuing education for all of our course offerings. We offer classroom courses, e-learning, workshops, training, Booth Company Certified Task Cycle coaching, CPP®, and Wiley DiSC certified assessments.

Our systems are SCORM, AICC, 504 and 508 compliant and LMS compatible. Our company was founded on the belief that our clients' needs are of the utmost importance. EverythingHR Talent Development Institute team consists of individuals who have a proven track record as instructional designers, trainers, college professors, college instructors, and business professionals. We offer superior training material.

We know how important it is to attract and retain knowledgeable and skillful employees. We offer a suite of advanced tools and services that provide expert implementation, hosting, and talent management needs. Keeping your employees trained and professionally advanced is at the heart of what we do.

Set your workforce apart from your competitors. Our training portfolio was created to keep your workforce professionally and technologically advanced. Choose from programs, individual courses, or video-based resources to best reach your goals.

COMPANY COMMITMENT

Our entire team is committed to developing cutting-edge programs that are a win for the employer and employee. During the initial planning meeting, we will furnish all stakeholders with a copy of our open dialogue policy. This policy was designed to create an ongoing dialogue with all stakeholders on the progress of the training from start to finish.

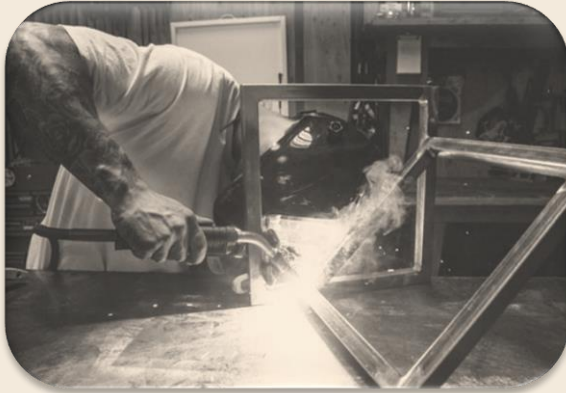
COURSES AND PROGRAMS

- Administrative
- Budgets and Financial Reports
- Engineering
- Human Resources
- Leadership
- Lean Six Sigma
- Manufacturing
- Project Management
- Sales and Marketing

Discrimination Policy

EverythingHR Talent Development Institute (ETDI) is committed to providing an equal training opportunity. ETDI and anyone involved in developing, administering, and delivering learning events are expressly prohibited from engaging in any form of discrimination based on race, color, religion, gender, sexual orientation, gender identity or expression, national origin, age, genetic information, disability, or veteran status.

MANUFACTURING AND ENGINEERING PROGRAM



The EverythingHR Talent Development Institute offers a comprehensive manufacturing and engineering program that is designed for those who seek to be at the forefront of change. This program will help you attract some of the brightest and best across the United States. It uniquely combines cutting-edge science and interactive learning to equip you with the skills you need to be on the cutting edge of manufacturing and engineering.

Program Courses

- Basic Project Management
- Implementing Project Management Strategies
- Applied Project Management
- Project Management Certification (7 day)
- Business Process Management
- Product Development and Management
- Introduction PEGA/PRPC
- Advanced PEGA/PRPC
- Total Quality Management – Basics
- Design of Experiments
- 7 Quality Tools
- Problem Solving
- Corrective Action, Preventive Action, and Continual Improvement
- Introduction to Lean
- Lean Manufacturing Service
- Lean System and Production
- Implementing Lean
- Six Sigma Yellow Belt
- Six Sigma Green Belt
- Process Improvement
- PLC Troubleshooting
- Basic Blueprint Reading
- Basic Engineering Design
- Engineering Mechanics
- Basic PLC Programming
- CAD/CAM
- Leadership Development





COURSE DESCRIPTIONS

Basic Project Management – 5 Days

\$1,500.00

Learn the Art and Science of Project Management. This is the first course in Project Management and is intended for beginners.

Implementing Project Management Strategies – 5 Days

\$1,500.00

Participants will learn how to establish and function in project organizations, establish criteria to measure and assess project performance and productivity and learn how to use systematic problem solving, decision making, and planning methods along with the introduction of MS Project.

Applied Project Management – 3 Days

\$950.00

This course is designed as an advanced level course in Project Management where participants will learn how to create project objectives, project scope, planning, directing, executing, monitoring, and risk analysis, by following specific integrated product development process and project management stages.

Project Management Certification Prep- 7 Days

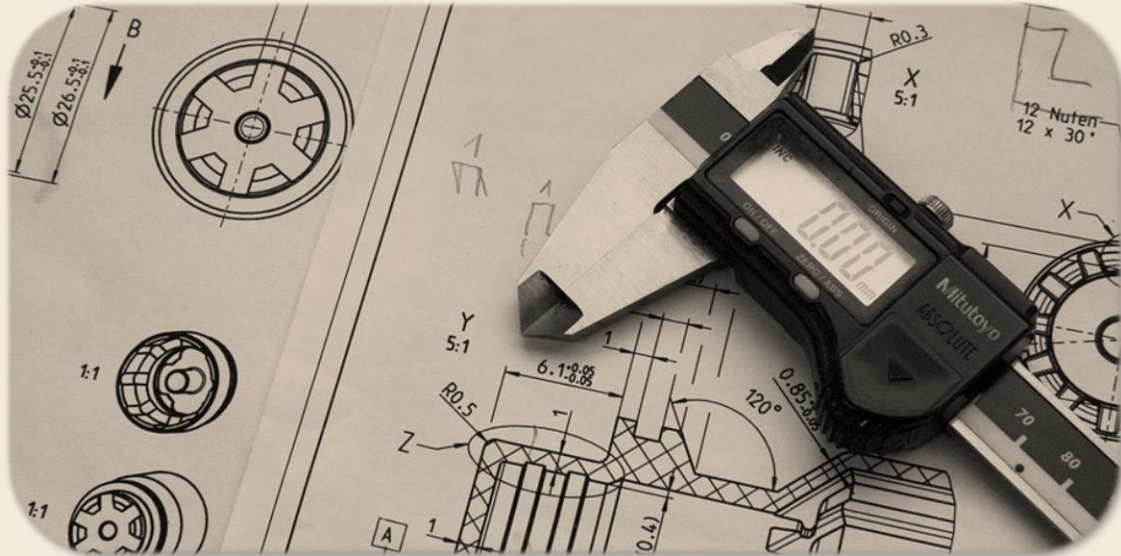
\$2,750.00

(These are two courses one targeted towards PMP and other CAPM). This course is designed for practicing engineers who would like to take the next step in their career by obtaining Project Management Institute's PMP and CAPM certifications. Participants will learn the Project Management Institute's Body of Knowledge (PMBOK Guide) and will use in-class exam and guides to prepare for these certifications.

Business Process Management – 2 Days

\$650.00

Learn Business Process Management by identifying customer requirements, business requirements and creating functional requirement documents. Participants will learn MS Visio to create business and other operations and processes.



Product Development and Management – 3 Days

\$950.00

The participant will be able to learn and apply the concepts and principles of integrated product and process design for the development of an actual product. Determine and evaluate design project goals, objectives, and design team member.

Introduction PEGA/PRPC – 2 Days

\$650.00

PegaRULES Process Commander is the latest generation of the Pegasystems business process management (BPM) solution built on the PegaRULES foundation. The purpose of this training is to cover the topics including the team building, various roles of the team members, talk about how Pega is different from other development tools, what would you get out of the box functionality along with Basic SDLC methodologies (Waterfall, Iterative, Agile).

Advanced PEGA/PRPC – 2 Days

\$650.00

This second-level training course on PEGA/PRPC will build upon the Introduction to PEGA/PRPC course. It includes BPM Overview and Pega BPM Methodology, Pega/PRPC 6.1 Tool overview and Fast Track. Pega Solution Implementation. Introduction to the CPMHC framework and how to build a complete framework application using PRPC (project).

Total Quality Management Basics – 2 Days

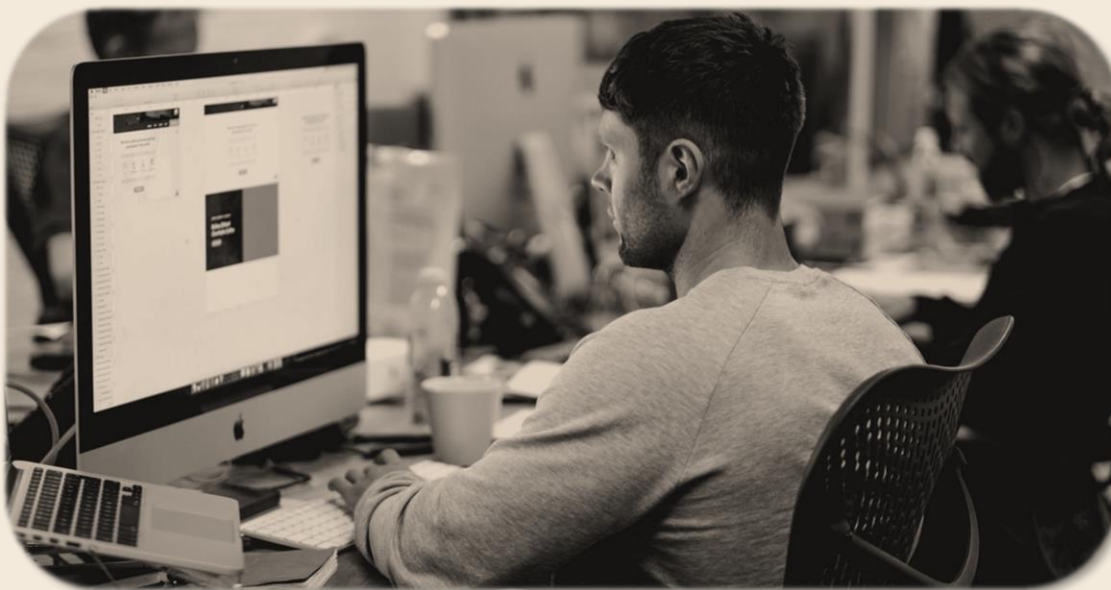
\$650.00

Total Quality Management (TQM) is a management approach to long-term success through customer satisfaction. Participants will learn how to make all members of an organization participate in improving processes, products, services and the culture in which they work. Participants will learn the methods for implementing the TQM approach using the teachings of such quality leaders as Philip B. Crosby, W. Edwards Deming, Armand V. Feigenbaum, Kaoru Ishikawa, and Joseph M. Juran. Deming's 14 points, will be used as a set of management practices to help companies increase their quality and productivity.

7 Quality Tools – 2 Days

\$650.00

This course will introduce 7 Quality tools including FMEA, FTA, SPS, Pugh, Fishbone, Pareto Analysis, and QFD. The training is customizable and can include any other Quality Tools. Real-time data and examples from trainees' workplace are utilized to explain concepts. Details and advanced training on these tools are also available.

**Design of Experiments – 5 Days****\$1,500.00**

In today's world understanding the processes and optimizing them helps companies to eliminate waste and improve the quality of their product and services. We provide three progressive trainings for Design of Experiment. Our training is customizable and helps to identify problems, select variables and develop objectives so as to plan and conduct an experiment. Participants will then create efficient designs to match the experimental objectives and create efficient designs to match these experimental objectives so that products and processes can be improved and optimized. Various DOE method will be discussed and actual problem solving will be facilitated during training.

Problem Solving – 2 Days**\$650.00**

The course trains engineers on various techniques of Problem Solving. During training, engineers will work with real manufacturing and other management problems related to administration and Human Resources.

Corrective Action, Preventive Action, and Continual Improvement – 2 Days**\$650.00**

This course assists participants in establishing an effective corrective and preventive action system using the 8-D model. Problem-solving tools such as brainstorming, cause-and-effect diagram, flow chart and the Pareto diagram are presented.

Introduction to Lean – 2 Days**\$650.00**

This is the first training course on Lean system management targeted towards higher management level and executives to help them understand Lean, gather data to make decisions about whether Lean is appropriate for their organization and how to create a Lean strategy for their organization.

Lean Manufacturing Service – 2 Days**\$650.00**

Dealing with your specific workflow activities, we provide Lean manufacturing, Lean service, and Lean enterprise training. This training covers a full spectrum of Lean knowledge, starting from fundamentals "know-how" classes to Green-Belt, Black-Belt, Master Black Belt, Champion, and SME Lean Six Sigma certification.

**Lean System and Production – 3 Days****\$950.00**

This course will focus on the elimination of waste, reducing costs, shortening cycle times, quality improvement, optimization of socio-technical systems, and the process of continuous improvement.

Implementing Lean – 2 Days**\$500.00**

Knowing Lean is one thing. "Implementing Lean" is another. This training will help managers to develop and plan activities to implement and monitor Lean strategies.

Six Sigma Yellow Belt – 2 Days**\$650.00**

Introduction to Six Sigma concepts along with a review of Statistics and Probability needed for using Six Sigma tools. This Yellow Belt training session is an introduction to the most common tools and principals used in quality today. In addition, it covers quality fundamentals needed for Six Sigma.

Six Sigma Green Belt – 2 Days**\$650.00**

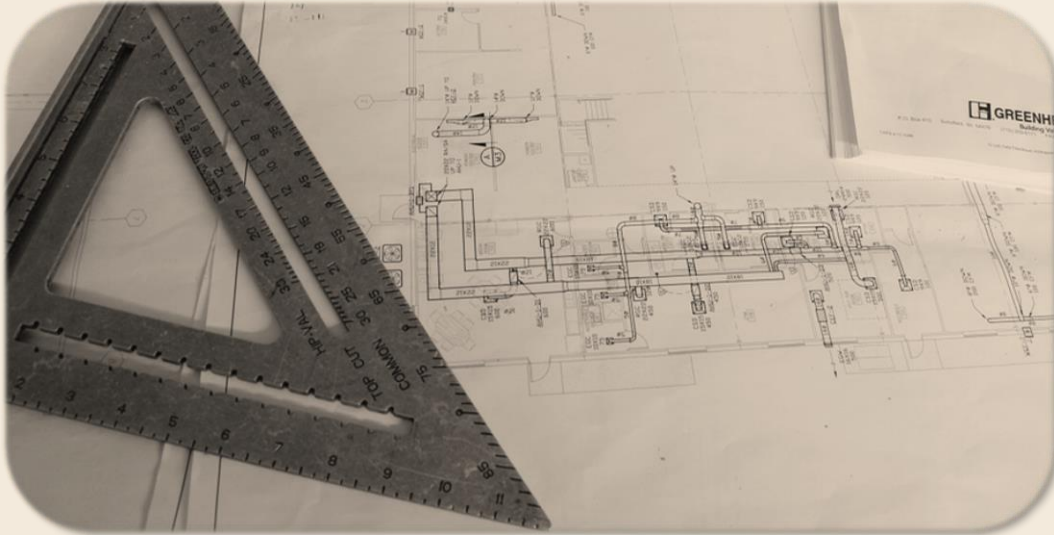
This Green Belt class focuses on using statistical tools for advanced problem-solving. Green Belt training helps to develop intermediate-level Six Sigma project managers that are capable of completing multiple projects per year.

Process Improvement – 2 Days**\$650.00**

This PI training covers the basics of process management and serves as an introduction to process improvement based on statistical tools. Participants will learn ways of capturing processes using various methodologies, identify shortcomings in the process based on mathematical tools and then recommending "to-be" improved process.

PLC Troubleshooting – 2 Days**\$650.00**

This course covers the basic concepts of programmable logic controllers (PLCs), PLC configuration and ladder logic diagrams versus relay loci diagrams. Basic PLC troubleshooting techniques are discussed, illustrated with examples and reinforced with hands-on practice using PLC simulators.

**Basic Blueprint Reading – 2 Days****\$650.00**

This course covers topics including basic principles of multi-view projection, dimensioning and section views, and metric systems. All topics involve hands-on exercises.

Basic Engineering Design – 5 Days**\$1,500.00**

Targeted towards employees with no 4-year engineering degree or have been in different work areas other than design, this training provides basic Mechanical Engineering Design concepts including review of the strength of material, solid mechanics, elementary design etc. Training is customized to include participants' work-related areas.

Engineering Mechanics – 5 Days**\$1,500.00**

The course combines Static, Strength of Material and Solid Mechanics to help participants better understand how to analyze mechanical systems. Course will cover 2D Static system analysis, Vector, Force and Moment, Equilibrium, Free Body Diagram, Stress, Strain, Stress-Strain Relationship, Linear Elasticity, Stress in Beams, Beam Analysis under axial forces and bending. Advance level training is also available that include torsion, circular shaft analysis, etc.

Basic PLC Programming – 2 Days**\$650.00**

This course features basic concepts of using programming instruction sets for programmable logic controllers (PLCs). It focuses on creating a new program using timers, counters, internal bits, examine on, examine off and forcing bits on / off. Techniques are illustrated by example and reinforced by hands-on exercises using PLC simulators.

CAD/CAM – 3 Days**\$950.00**

This course is an overview of CAD software designed to familiarize participants with the capabilities and features of AutoCAD as well as highlight its advantages versus manual drafting. It is designed to help with CAD/ CAM software selection as well as serve as a precursor to other related hands-on training.

Leadership Development – 5 Days**\$1,500.00**

The EverythingHR Talent Development Institute Supervisors, Managers, and Business Owners' Program is a comprehensive management and leadership development program designed for those who seek to enhance their management and leadership skills within the context of manufacturing and engineering.

Course Selection

[illegible]

Course Selection

[illegible]

For group registration fax (586.461.1181) or email (support@EverythingHRFS.net) the primary contact information along with pages 10 and 11. Upon receipt a representative will contact you to discuss course dates for your group.

Primary Contact Name	Primary Contact Title	Primary Contact Email	Primary Contact Phone



EverythingHR

Talent Development Institute

Administrative Office:

1055 E. South Blvd Suite 225 Rochester Hills, MI 48307

586.461.1400 Office

586.461.1181 Fax

www.EverythingHR.net

Training Location

440 Burroughs Detroit, MI 48202